

Define the title block in the PLT

In the program Slabs by Finite Elements PLT, large-format plans can be attached to the end of the structural analysis document. Similar to the page header in the statics document, a „Title block“ can also be defined for the plans (Fig. 1).

Use one of the templates as a basis, which you can find in the FRILO Control Center under the menu item ▶ Extras ▶ Page layout ▶ Title block templates. ! Attention, please click directly on the small arrow pointing downwards in the symbol (the difference to clicking on the upper part of the symbol is explained in the operating principles) - see Fig. 2.

In the „Edit Template“ dialog you can then click on one of the installed templates and then on the „New“ button (Fig. 3). You will then see the structure of the template (Fig. 4). In this way, you can first have a look at the other templates and only then edit the template that is suitable for your adjustments.

Edit template

In the following example, the „Title block minimum“ is selected. Only the three (important) information texts are entered here, which can be seen by default above the graphics in the PLT and explain the meaning of the graphics shown.

Superposition 2 "USL Permanent/Transient"
Reinforcement, bottom: Total - aS-1, aS-2 [cm²/m]

	<P1>	<P2>	<P3>						
19	0,92	1,06	0,96	0,65	0,32	0,65	0,94	1,04	0,79
	0,80	0,83	0,90	0,58	0,27	0,60	0,82	0,85	0,80
18	0,89	1,15	1,21	1,04	0,76	0,99	1,08		0,85
	1,10	1,10	1,05	0,90	0,66	0,93	1,07		1,08

Info texts for the graphic - inserted in the title block as placeholders <P1>, <P2>, <P3> - in this case <P3> is a blank line.

To adjust the font and size, color, alignment, border lines, etc., click on the individual text fields and change these text field properties. The individual options are described in the FDD manual under „Page layout“.

Dimensions of the title block

Under the „Common“ tab you can specify the width and height in [mm] (in this example 120 x 74 mm). Here you also define the „Border lines“ for the title block and the margins for the entire plan page (Fig. 5). The macro and placeholder functions are described on the following page.

Insert logo

Now continue with the „Edit“ tab. To insert a logo, click on the „Image“ icon and select your logo graphic. The inserted graphic can then be scaled appropriately using the handles and can be moved using the mouse or the arrow keys on the keyboard, for example be positioned on the right edge.


FRILO Software GmbH		
Stuttgarter Str 40 70469 Stuttgart info@frilo.eu Tel.: 0711810020		
Projekt: PLT-Plan header		
Client: Ziegler		
Component description	Item	
SB-Ceiling h=22cm above Basement	Position: 301 FDD	
Infotext plan:	Load case 1 "Lastfall G"	
	Moments - m-1, m-2, m-12 [kNm/m]	
	Characteristic Values (x 1)	
Item changed:	Measure:	Project No.:
date: 05.07.2021	1 : 75	2021-06

Fig. 1: Example of a self-defined title block.

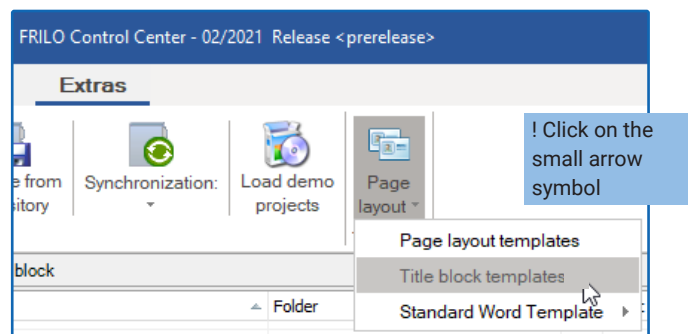


Fig. 2: Call up templates for title blocks.

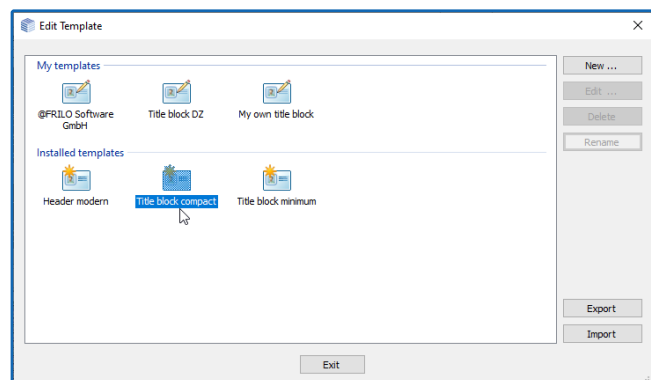


Fig. 3: Above the templates that have already been created, below the supplied, installed standard templates.

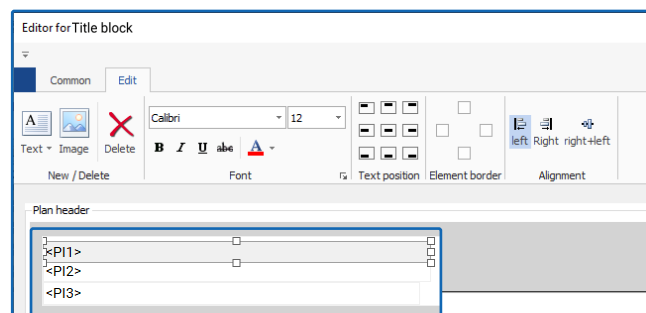


Fig. 4: The selected „Title block minimum“ in the editor.

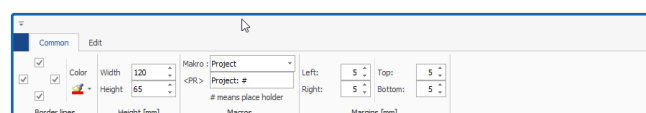


Fig. 5: Dimensions of the title block in the „Common“ tab.

Enter company name

Next, enter your company name. To do this, click on „Text“ and select „free text“ (Fig. 6).

Tip: If you mark an existing text field beforehand, the new text field will be created with the properties of the marked text field. That means the font and size, text position etc. will be adopted from the marked text field and you only have to adjust them slightly in the new text field.

The new text field appears. Position it (top left corner) and adjust the size using the handles. Choose a slightly larger font (14) and click on „B“ for bold text and choose a suitable color (dark blue). Double-click on the text field and change the content (FRILO Software, Fig. 7).

Repeat this for the next text fields such as street, zip code and city, telephone number, etc.

Tip: Before each new text field, click briefly on the existing text field <PI1>, for example, in order to adopt its properties (and to exit the editing mode of the text field just entered).

Finally, you can mark the last text field (Tel.), extend it to the full title block width using the middle handle on the right and assign it a lower element border line (Fig. 8) – structure your title block with border lines and ensure that the individual items are clearly displayed.

Insert placeholder

Click on „Text“ and here on „<PR> Project.“ A text field with the placeholder <PR> is inserted. If you assign this title block to your project, the associated project name will appear at this point.

Some of these placeholders are self-explanatory (page number, etc.). Placeholders e.g. for project number or client can be found under „Extended“ (Fig. 9). You can find the equivalent in the FRILO.Control. Center by right-clicking on the respective project under „Properties“ (Fig. 10).

Note: The entries „Item number“ and „Chapter“ only make sense with corresponding entries in the FRILO Document Designer.

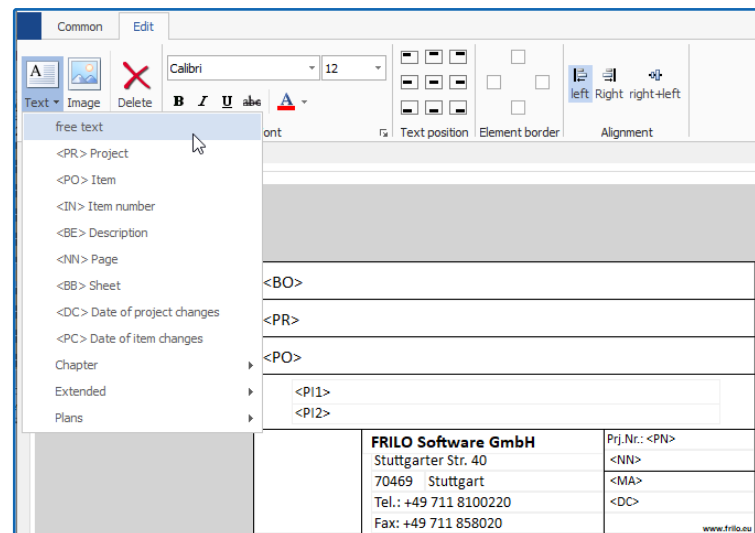


Fig. 6: Create a new text field with free text. The other entries are placeholders such as <PR> for the project name.



Fig. 7 The inserted and formatted company name.



Fig. 8: Line at the bottom of the text box frame.

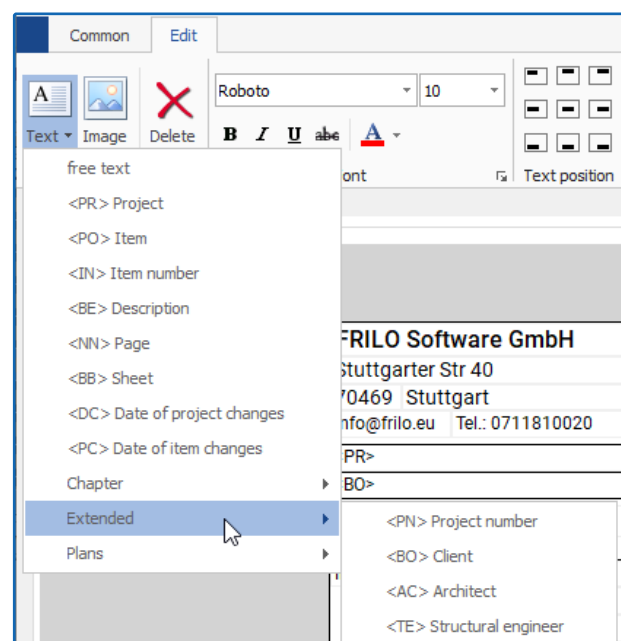
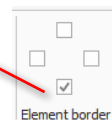
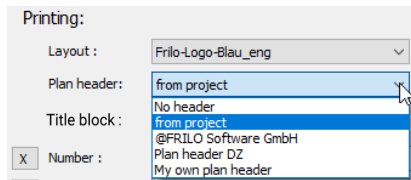


Fig. 9: Selection list of placeholders.

Project properties - extended placeholders

In the project properties dialog you will find the project name by default. In the area „Printing - Title block“ (Fig. 11) you can assign one of your existing/saved title blocks to the project.

The fields for the project number, designer, architect, client and description can be activated in the properties dialog via „Append field“.



Save the new title block

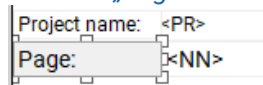
Back to editing the title block. Insert all other text fields and placeholders as described and then click OK. Enter a name for this title block and save it. The title block now appears in the „My templates“ section (Fig. 3). You can call it up again at any time for editing/changing.

Macros for the placeholders

You can create a prefix for the individual placeholders under the „Common“ tab. For example, you can prefix the page placeholder <NN> with the text „Page:“. You can change or delete the standard header text here.



Tip: if you want to align the fields vertically flush with one another, you can alternatively insert a header text as a „free text field“ - then you should of course delete the standard text „Page:“ under „Macro“.



Plan view in the PLT

You can select the plan format (e.g. A3, portrait format, with/without title block) via the „Output“ tab (Fig. 12). The checkmarks for the plans to be output must be set in the output profile (right column „In Plan Format“).

Now call up the preview and click on the „Plans“ tab. You can edit the title block for this project via the „Title block“ tab - the template itself is not affected by this (Fig. 13).

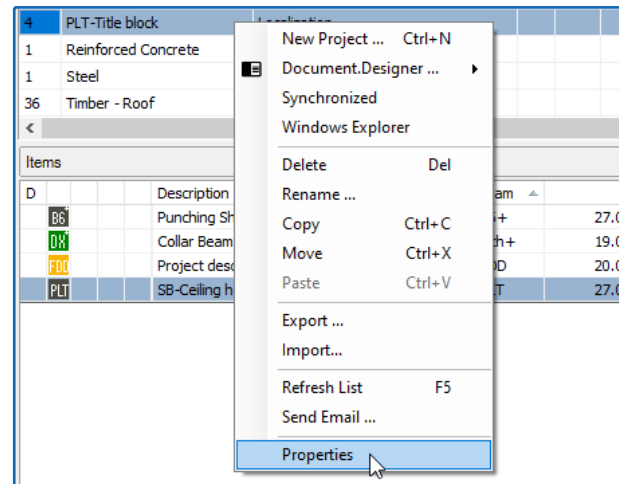


Fig. 10: Right click on the project in the FCC, call up the project properties.

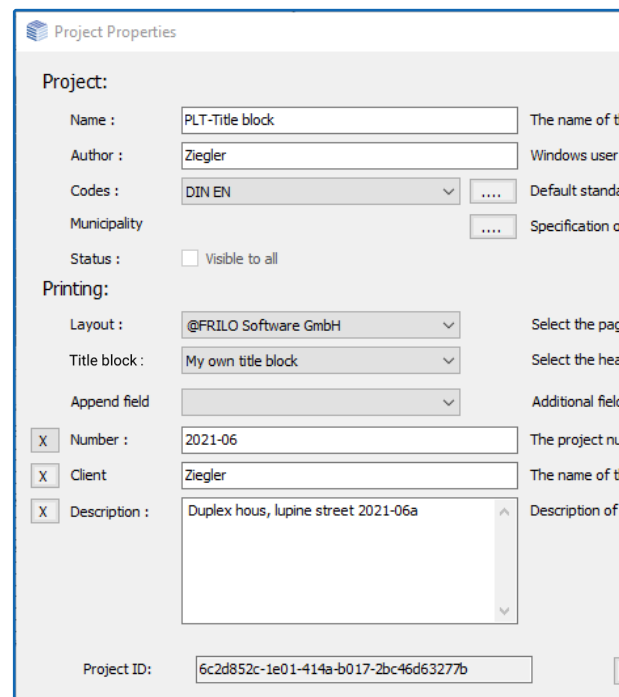


Fig. 11: In the project properties, you can assign an existing title block to the project and add extended property fields such as client, description, etc.

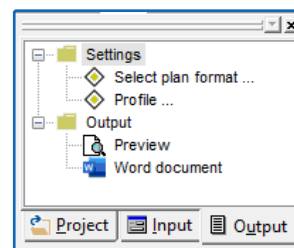


Fig. 12: The „Output“ tab in the PLT.

Fig. 13 below: Page preview with the „Plans“ tab and the „Title block“ button.

