

# Output and printing

## Contents

Print	2
Print all	2
Print preview	2
Page header	3

## Basic Documentation – Overview

In addition to the individual program manuals, you will find basic explanations on the operation of the programs on our homepage [www.frilo.com](http://www.frilo.com) in the Campus-download-section.

### Note:

With the [FRILO Document Designer](#) the documents of a project can be organized much easier and more comfortable. In addition to the static outputs from the Frilo calculation programs, external formats and applications can also be integrated into the document using FDD. FDD offers practical functions and extensive layout options

## Print

Menu options ▶ File ▶ Print ...

Launches the print. In a dialog you can choose the print settings.



You can also click on the printer-icon to start the print.

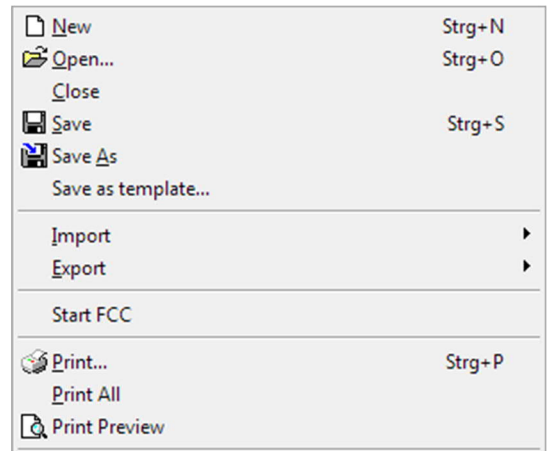
## Print all

Menu options ▶ File ▶ Print All

All data selected for output in the output profile are printed.

### Output scope / output profile

Applications with complex output options offer an "output profile", where the user can customize the scope of the output. The corresponding dialog window is most of the time displayed in the left menubar or can be activated via the menu item "Edit".



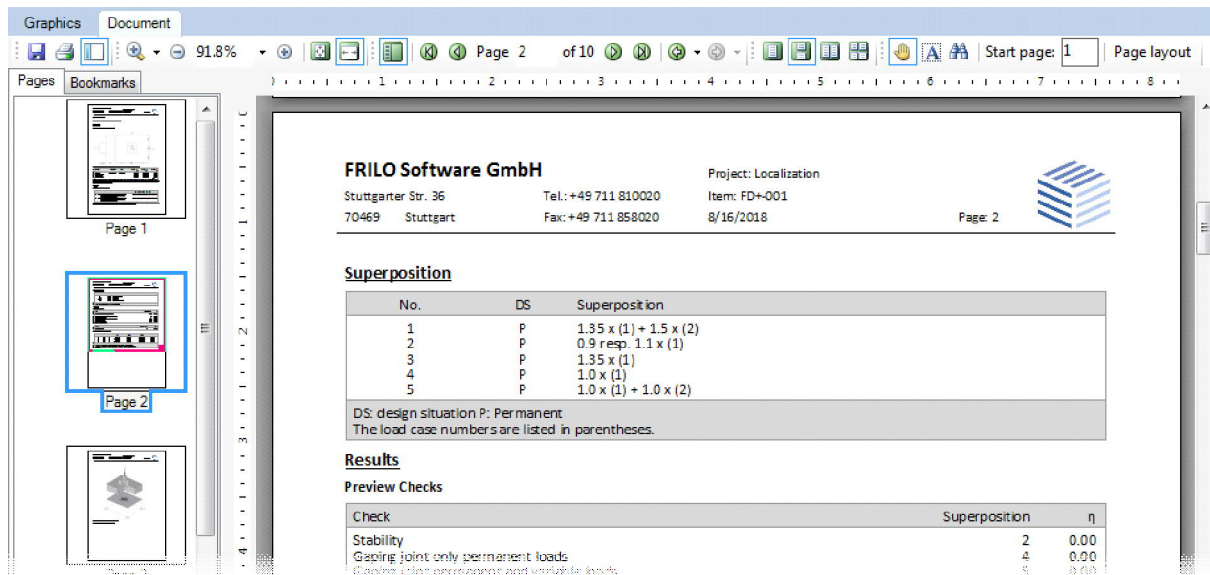
## Print preview

*Note:* The interface looks a bit different in the PLUS programs - there you call up the page view via the "Document" tab.

Menu options ▶ File ▶ Print Preview

The print preview allows the user to check the page layout before printing.

Operation is based on the usual PDF conventions.



The whole page is shown. Scrolling back or forth displays the previous or subsequent page. The user can select the page to be displayed also by clicking on the corresponding thumbnail in the left screen section.

The thumbnails and bookmarks can be hidden or displayed.

Various zoom (magnifying glass button) and page view functions are available.

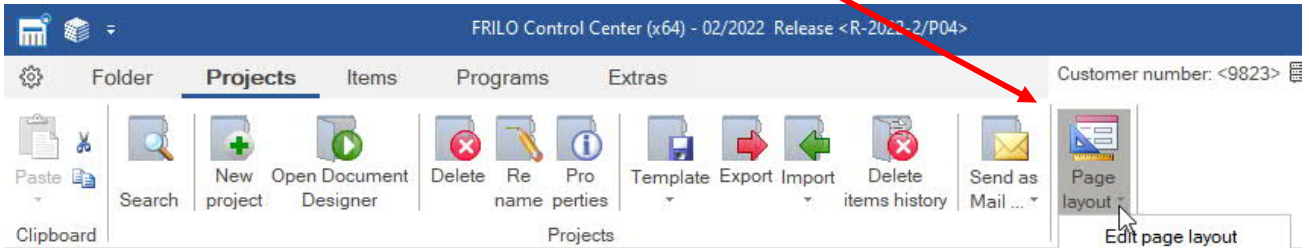
Hints to the functions of the buttons are displayed in the form of tooltips when the user moves the mouse cursor over the button.



Starts the output on a printer.

## Page header

You can define your own page header in the [FRILO Control Center](#) ▶ Pagelayout or in the [Document Designer](#), if this application is installed.



*Note: If documents for individual projects were generated by a demo installation with the Document Designer, these must first be deleted if the Document Designer is not licensed. Only then can the page layout be called up in the Frilo Control Center.*

